

# Flexitank Installation and Discharging Manual (TLBD)

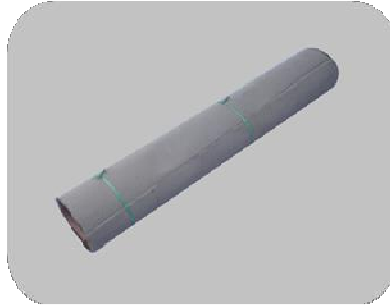
## 1、 Container Selection Criteria :

- ① Containers should be manufactured strictly in accordance with all the relevant ISO requirements, defining design, dimension, rating, testing, identification, nameplate, operation requirements.
- ② **Heavy Duty Container** is a must. "Max. rated loads : 30Ton (30480kg or 67000lb) " should be indicated on container labels.
- ③ All 20 foot standard containers should be no more than 5 years and under good condition.
- ④ NO repair trace is allowed on outer container panels. All panels are free from repair.
- ⑤ Containers should be suitable for highway, railway and ocean transportation.
- ⑥ Either door bolt has a vertical groove or recess aside.
- ⑦ Two fully workable locking bars are on either door.
- ⑧ Containers should be free of any "DANGEROUS" cargo markings or labels, and haven't loaded any radioactive or toxic material harmful to humans.
- ⑨ Containers for the use of the transport of flexitanks should be clean and dry, free of any debris, sharp edges, floor splinters, loose floor screws, dents or any such weld or similar repair on the inside surface of the cargo area that may cause damage to flexitanks. All interior surfaces, including the floor surface, should be free of transferable stains and other sources and contamination that may react with the flexitank material and/or leach into the liquid cargo.

## 2、 Flexitank and Accessory :



1 pc of flexitank



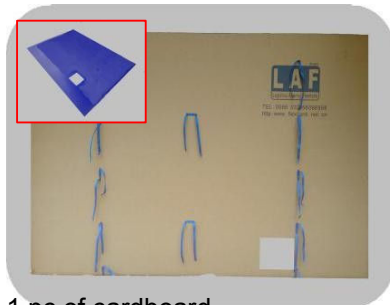
1 roll of corrugated paper



4 pcs of common steel bar+ 1 adjustable bar



1 pc of vertical steel bar (door packer)



1 pc of cardboard

### 3、 Container Cleaning :



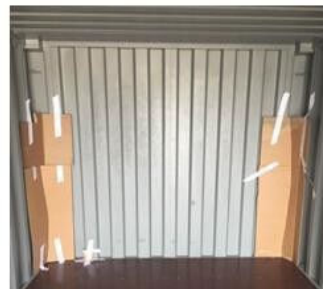
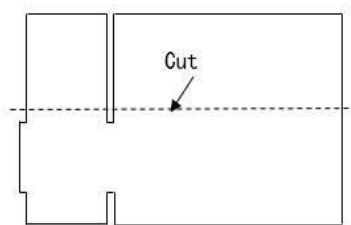
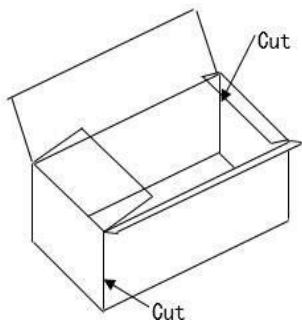
Clean the container carefully, make sure no any contamination on surface, All interior surfaces, including the floor surface, should be free of transferable stains and other sources of contamination that may react with the flexitank material and/or leach into the liquid cargo.

### 4、 Check & Protection :



Containers Wall and Floor should be clean and dry, free of any debris, sharp edges, floor splinters, loose floor screws, dents or any such weld or similar repair on the inside surface of the cargo area that will cause damage to flexitanks. Please use cardboard or foam to cover the potential risks.

### 5、 Container Protection :



Cut the flexitank carton, and protect the four corners first. In recent years, the four corners of container becomes sharp, so protect the four corners is important.



Fit the corrugated paper roll on the container and wall. **Make sure there is overlap for 15 CM in the bottom side.**

## 6、 Install the flexitank :



Take the flexitank out from the carton and place it on the right side of container, about 1.8 m away from container door



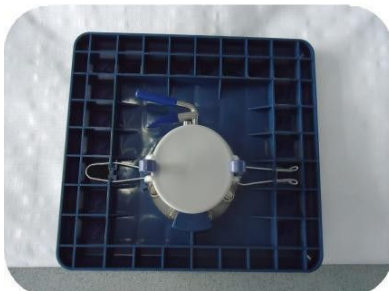
Make sure the bag middle folding line is in the same line with container



At 4 corners you will find **blue marks**, that is the container size, in this way, we make sure the flexitank placed in right position.



**Fold 50cm front part of bag to save a space for cardboard installation.**  
**Do not step on the flexitank.**



Take off the foam from valve



Take off the foam from air vent



For hose vent, fix the hose end with the 1st right loop, and open the cap.

## 7、 Install steel bar and the cardboard :



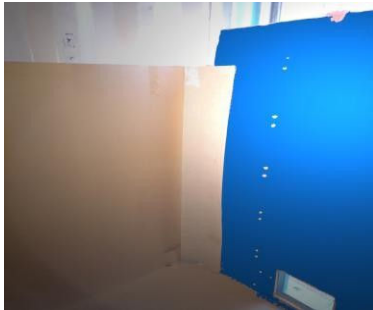
Paper Cardboard is with 20 cm hem which shall be put beneath the flexitank. This is to prevent the cardboard from upward moving during transportation. container door



Fix adjustable bar on floor, screw the bolt tightly



Put the cable tie, and other bars according cardboard holding position



The paper set side at the door shall be fold into paper angle to fix on the cardboard



Use cable tie to fix the bars and the vertical bar

## 8、 Fix RPB :



Pull out the valve



Fix the RPB on board with cable ties ;



Close the left door, seal the caution label

## 9、 Loading& Tips :

Loading temperature : -20~60℃ ;

Loading Speed : less than 500Lt/min (too fast speed may cause damage to bag and valve) ;

Loading time : 40-60mins (it depends on the cargo density and ambient temperature) ;

Loading Quantity : volume is **+500Liter** of the nominal capacity ;



Take off top valve cap



Clean the pipe& adaptor and connect the adaptor with the valve



Use the string to hang the loading pipe and make sure it is **vertical** to the floor



Connection of valve and pipe shall **be upright, not being tilt. This will release the pressure to the bag.**



Cover the bonnet on the loading pipe, in case any spillage comes out



Start engine and start loading. Watch the loading process closely. After it reach the required quantity, turn off the pump and close the valve handle, screw the cap.



Cover the bonnet with string. (If have hose airvent, close the hose airvent cap)



Close right door, put on the Caution Label on the LEFT Door, Make sure the container door is closed well before leave.



## 10、 Discharging :



Open the RIGHT door ONLY. Take



Keep discharging evenly, keep the



Open the valve, start pump. Control

off the anti-dust cap, connect the pipe, During installation, pressing and pounding the valve violently are forbidden



When top flexitank touch the container floor, we suggest to slow down pump, which is helpful to reduce the residue

loading pipe and the bottom valve at same level.



Roll up the discharged flexitank like a toothpaste tube from inside, and slowly discharge the residue. After discharge completed, close the valve, turn off pump.

the pump speed below 600Liter/Minute.

When the liquid left 1.5ton -3 ton, reduce the pump speed by 1/3.



Open the LEFT door and Disassemble the accessories



Place the accessories on forklift and move to designated area.

Dear Valued Customers,

You are kindly requested to comply with the installation & operation process, otherwise, it may cause unnecessary loss to you. Thanks again for choosing Flexitank/bag products, and we expect your precious advices for our products and that will be useful and helpful to improve the quality of our products.

## Perfect Bulk Solution

PO Box 126899

Dubai - UAE

Tel/Fax : +971 4 2342019

Mbl : +971 50 9853072/ 561911661

Email Id: pbsintl@outlook.com